

Contents

Title	Author	Page
Articles		
Blackbirds in Great Lane	Joss Goodchild	11
Conservation Group	Sue Clifton	6
Interested in Volunteering?		22
Llama Shearing	Rebecca Fordham	4
Neighbourhood Watch		22
Reach Community Solar Farm		22
Anglesey Abbey	Meghan Curteis	-
Bottisham and Burwell Photographic Club	Daphne Hanson	12
Burwell Museum and Windmill	Sara Phipps	13
Burwell and Reach Car Scheme	Pam King	30
Burwell Surgery		-
Bus Timetable		31
CentrePeace		3
Church		
Church Services		31
Letter from the Vicarage	Eleanor Williams	18
Reach Church Development Update	Pat Chalmers	19
Contact Information		32
Diary Dates		31
Events Team		5
Food Focus	Catherine Gibson	14
Mobile Library		11
Nature in Reach	Cath Tayleur	9
Parish Council		
Know your District Councillors		21
Know Your Parish Council		21
Meeting Minutes		23
Quy Mill Hotel and Spa		16
Rosanna's Ramblings	Rosanna Moseley Gore	7
Sport and Recreation		
Cricket Report	Ross Clark	20
Reach Riders	Sue Cameron	6
Tales from a Reach Garden	Danuta Gibson	17
Then and Now	Chris Patterson	32
Village Hall	Sue Elliott	6
Village Update	Alex de Giorgio-Miller	3
Wicken Fen	Julia Hammond	12

From the Editor

Another two months have flashed by – again! And the weird weather continues to surprise us all but pleasingly even when its at maximum heat or cold, we seem to survive a good deal better than some other parts of the world which we see on the new from time to time.



We have a “new” Parish Council in place, thankfully (financially at least) there was no need for an election, but there is still the same problem of encouraging villagers to join the Parish Council. We should have 7 Parish Councillors in place and currently have just 4. It’s not an onerous task and with good chairmanship, the meetings are relatively short and sweet. When I came to the village in 2007 I became the Parish Clerk and overall thoroughly enjoyed the experience - I learnt so much about the village in no time at all. And don’t think you need any great specialist skills to be a councillor – the most important thing that is needed is common sense and there is plenty of that around in Reach. So why not give it a go? Speak to Susan Bailey – contact details on page 21. You don’t sign up for any time period and if ultimately you don’t like the experience then, unlike the Hotel California, you are free to leave.

In this issue we welcome back Joss who tells us about the Great Lane blackbirds and Rebecca Fordham describes the delights (and expense) of owning Llamas. And sadly, Ross has the job of recounting the news of our cricket teams latest “so near and yet so far”.

But this editorial can end on a high. Please check out the back cover where you’ll see the lovely news regarding Dan and Ruth who now have baby Leila as well as a pub to look after! And based on their recent award, if they look after her as well as they look after the pub, then she is a lucky girl indeed!

David Parr

Cover picture courtesy of Mandy Manchett



About the Magazine

The purpose of *Within Reach* is to serve the whole village by circulating information and interesting articles free to every household. Additional copies are available at a charge of £2.50. Issues are published bi-monthly covering the months of Feb/Mar, Apr/May, June/July, Aug/Sept, Oct/Nov and Dec/Jan.

Copies of *Within Reach* magazine and its predecessor *Out of Reach* can be found on the village website www.reach-village.co.uk. This magazine (which is fully funded from advertising) is printed by Burwell Print Centre, an excellent social enterprise which trains and supports adults with learning disabilities and provides high quality design and print capabilities.

The Team

Editor	David Parr
Distribution	Freda Lloyd, Claire Halpin-McDonald and Grahame Radford
Photographer	Rosanna Moseley Gore
24Acres	David Thomas
Anglesey Abbey	Meghan Curteis
Church	Eleanor Williams
Cookery	Catherine Gibson
Cricket	Ross Clark
Events Team	Debbie Quilter
Gardening	Danuta Gibson
Getting to Know You	Karen Carpenter
Neighbourhood Watch	Kevin Evans
Reach Riders Group	Sue Cameron
Rosanna’s Ramblings	Rosanna Moseley Gore
Snakehall Farm	Liz Pitt
Then and Now	Chris Patterson
Village Matters	Alex de Giorgio-Miller
Wicken Fen	Julia Hammond
Wildlife	Cath Tayleur

Village Update

The summer holidays are nearly here – hurrah! We are looking forward to slowing the pace and hopefully enjoying lovely weather in the garden and out and about. It always seems to fly by so the girls have made a long list of things they want to do to make the most of it! Hopefully you'll be able to make time for a break to recharge too.



Could you mentor a young care leaver?

Cambridgeshire County Council is partnering with social impact specialists, Goal 17 Ltd to launch a mentoring programme aimed at supporting young care leavers. The programme will recruit and train mentors from across the county to provide guidance, advice and support to young care leavers as they navigate the challenges of adulthood. This will help young people to build self-esteem, develop new skills and achieve their full potential.

Local people are being invited to volunteer as mentors in this forward-thinking programme to become a mentor. Individuals will undergo a training program provided by Goal 17 Ltd that will see them learn valuable skills and receive a university certificate in recognition of their progress.

The mentoring programme is set to launch in the coming months and Goal 17 Ltd is actively seeking mentors to participate in the program. If you are interested in becoming a mentor, please email communications@cambridgeshire.gov.uk for more information.

The Library Presents – a fantastic summer arts programme

A vibrant and inclusive arts programme is returning to Cambridgeshire this summer, thanks to The Library Presents. Over 600 local residents helped to choose the season's performers and events, scheduled to run across the country during July and August. The Summer Season offers an incredible line up and brings the opportunity to enjoy lots of fantastic live music, with plenty of events for families and a sprinkling of theatre, dance and comedy.

Tickets are now on sale and are selling fast! Standard performances are £8 and workshops are £6. Concessions and other affordable options will be available, in order to make the events as accessible as possible.

For more information, please visit: <https://www.library.live/the-library-presents>, or stay up to date on Facebook and Instagram at: @TheLibraryPresents.

Holiday Activity and Food programme

This summer, the Holiday Activity and Food (HAF) programme is offering free spaces for children in Cambridgeshire who are eligible for free school meals, to enjoy enriching experiences and nutritious food.

With a focus on providing healthy meals alongside engaging activities, this programme is ideal for children who want to stay healthy and active this summer. Each session will include a nutritious meal, a variety of exciting activities or sports and the opportunity to socialise with other children. The programme will run from 20 July to 31 August, with the exception of bank holidays. Eligible children can attend a holiday scheme for free for up to 64 hours.

Further information can be found at [Cambridgeshire Holiday Activities and Food \(HAF\) Programme 2023 - Cambridgeshire County Council](#).

New SEND information hub

Support for parents and carers of the approximately 15,000 children with special educational needs and disability (SEND) in Cambridgeshire is now available at the click of a button through a new information hub. The tool was produced to help families and young people to navigate the special needs journey and access information and advice. The SEND information hub will have guidance and resources for children of all ages, featuring topics like early years, education and preparing for adulthood. With specific sections on health, finding the right support and social care it gives families unlimited access to information that can help them feel empowered and educated on what is locally available. The new information hub can be found here: <https://send.cambridgeshire.gov.uk/>

Keep well and enjoy the sunshine!

Alex de Giorgio-Miller



CentrePeace is run by volunteers and supported by our churches. Opening times may be extended as more volunteers feel able to come forward.

If you wish to volunteer, please get in touch with Hazel Williams (743897), even if you have worked in the shop in the past.

Tuesday 10 - 12.30
Wednesday 2 - 4
Thursday 10 - 12.30
Friday 10 - 12.30
Saturday 10 - 12.30

Llama Shearing

It was with some trepidation I put the call into the dashing duo (Tony and Fergus) as at this time of the year shearers are rarer than hen's teeth and can be bad tempered, grouchy and unreliable, not to mention costly. I am happy to report that Tony and Fergus were excellent DESPITE sustaining injury at a previous shear (as an observer you can see how easily that can happen).



They both performed stoically and good humouredly, with an audience of three well-intentioned but effectively not perhaps as helpful as they perhaps could have been youngsters of the human variety.

The two Real Stars of the very hot day were, of course, Caspian and Whisset (originally at Catanger llamas Silverstone) - who are living their very best life in the Shires, pottering, playing and taking everything in their mostly calm stride.

Onto to some interesting facts about a couple of the FF (Family Fordham) pets

- Llamas are members of the camelid family meaning they're closely related to vicuñas and camels.
- Camelids first appeared on the Central Plains of North America about 40 million years ago. About 3 million years ago, llamas' ancestors migrated to South America.
- During the last ice age (10,000-12,000 years ago) camelids went extinct in North America. Now there are around 160,000 llamas and 100,000 alpacas in the United States and Canada.
- Llamas were first domesticated and used as pack animals 4,000 to 5,000 years ago in the Peruvian highlands.

- Llamas can grow to be 6 feet tall though the average llama is between 5'6" to 5'9" tall.
- Llamas weigh between 280 and 450 pounds and can carry 25 to 30 percent of their body weight, so a 400-pound male llama can carry about 100-120 pounds on a trek of 10 to 12 miles with no problem.
- Llamas know their own limits. If you try to overload a llama with too much weight, the llama is likely to lie down or simply refuse to move.
- In the Andes Mountains of Peru, llama fleece has been shorn and used in textiles for about 6,000 years. Llama wool is light, warm, water-repellent, and free of lanolin.
- Llamas are hardy and well suited to harsh environments. They are quite sure-footed, easily navigating rocky terrain at high altitudes.
- Llamas are smart and easy to train.
- Llamas have been used as guard animals for livestock like sheep or even alpacas in North America since the '80s. They require almost no training to be an effective guard.
- Llamas don't bite. They spit when they're agitated, but that's mostly at each other. Llamas also kick and neck wrestle each other when agitated.
- Llamas are vegetarians and have very efficient digestive systems.



Caspian and Whisset

- A llama's stomach has three compartments. They are called the rumen, omasum, and abomasum. A cow's stomach has four compartments. Like cows, llamas must regurgitate and re-chew their food to digest it completely.
- Llama poop has almost no odour. Llama farmers refer to llama manure as "llama beans." It makes for a great, eco-friendly fertilizer. Historically, the Incas in Peru burned dried llama poop for fuel.



- Llamas live to be about 20 years old, though some only live for 15 years and others live to be 30 years old.
- A baby llama is called a "cria" which is Spanish for baby. It's pronounced KREE-uh. Baby alpacas, vicuñas and guanacos are also called crias. Mama llamas usually only have one baby at a time and llama twins are incredibly rare. Pregnancy lasts for about 350 days, nearly a full year. Crias weigh 20 to 35 pounds at birth.
- Llamas come in a range of solid and spotted colours including black, grey, beige, brown, red and white.
- Llamas are social animals and prefer to live with other llamas or herd animals. The social structure of llamas changes frequently and a male llama can move up the social ladder by picking and winning, small fights with the leader of the group.
- A group of llamas is called a herd.
- Llamas have two wild "cousins" that have never been domesticated: the vicuña and the guanaco. The Guanaco is closely related to the llama. Vicuñas are thought to be the ancestors of alpacas.
- The current population of llamas and alpacas in South America is estimated to be more than 7 million.
- Yarn made from llama fibre is soft and lightweight, yet remarkably warm. The soft, undercoat is used for garments and handicrafts while the coarse outer coat is frequently used for rugs and ropes.
- Trying to tell the difference between a llama and an alpaca? Two obvious things to look for: Llamas are generally about twice the size of alpacas and alpacas have short, pointy ears, whereas llamas have much longer ears that stand straight up and give them an alert look.

So now you know 😊

Rebecca Fordham

Events Team

Having thoroughly enjoyed our Coronation Event, this is a quiet time for the team, when we focus on our post summer events.

Sports Day

This is planned for **Sunday September 3rd**



MacMillan Coffee Morning

This will take place on a Saturday towards the end of September or early October, dependent upon the venue.

Coronation Tree

The team are planning to source and plant a tree to commemorate the Coronation. Looks like we have a location for it, the Reach Cricket Club would be happy to have it positioned on the left of their pavilion as you look at it from the front – at a sensible distance so it has room to grow. Choice of tree and sourcing will be agreed and take place shortly.

Village Advent Calendar

This will start as always on **Friday 1st December**.

Christmas Tree Lights Switch-on

Sunday 3rd December 5-6pm, Brass Band, Mulled Wine

Senior's Christmas lunch

Thursday 14th December 12.30-3pm in the Village Hall

Carols around the Tree

Christmas Eve, Sunday 24th December 6-7pm

Santa's Visit

He's said he'll come along again as long as the village behaves – so fingers crossed!

David, Debbie, Hannah and Jo

Reach Riders



It's lovely to see the arena being well used. Craig is doing a great job with the mowing and strimming and more recently a repair on one of the cavaletti jumps. In addition, lessons continue with Lucy on a Saturday.

We have treated the show jumps and some of the cross country jumps with preservative - we will get the rest of the cross country jumps finished in the next few weeks.

New members are trickling in, which is good to see and the finances remain in good order such that we haven't got any fund raisers planned in the immediate future.

Do let us know if there is anything you would like to see happen in relation to social events, arena events or anything really.

Sue Cameron

Conservation Group

I am wondering if we can do more in Reach to support wildlife. We are lucky to have a many green spaces offering a variety of habitats in the parish including Reach Wood, 24 Acres, the Dyke, the Lode, the Plantation, Wicken Fen and the Cemetery.

It would be easy to be complacent, but with the numbers of wildlife falling drastically everywhere, I am wondering if there is more we can do in our Parish to help support and promote wildlife diversity. I am thinking of things like putting up more nesting boxes for birds and bats, filling in gaps in our hedgerows, planting trees, sowing wildflower meadows, and connecting habitats to each other to prevent species isolation. Perhaps having meetings with speakers as well.

If you would like to join me in setting up a Conservation Group in Reach please contact me on s.m.clifton@btinternet.com.

Looking forward to hearing from you

Sue Clifton

Village Hall



It is very good news to report that we have received a grant of £640 from the Reach Community Solar Farm to commission a report into the future heating and power needs of the VH. This will be the first step of what is likely to be a very expensive and exciting project and we are pleased and grateful to the Community Solar Farm.

Over the past few months, we have been gathering as much information as possible about the engineering and grants available and it is clear that the Village Hall needs new environmental and cheaper sources to heat and power the building if it is to remain economically viable as oil and electricity are becoming unaffordable.

We hope that we will be able to attract more bookings and that the VH will be self-sufficient in power and make the building warmer in the winter with cheaper lighting in the future.

Can you offer help to get the technical advice and report underway now that we have this opportunity thanks to the Community Solar Farm. We are a small committee and many of us have been involved for a long time and we need new ideas and expertise to make it happen.

We shall hold our AGM on Monday 25th September at 8pm in the Village Hall - and it would be a great boost to see some new faces and newcomers to the village offering real help and support to keep the VH open and prospering.

And finally, a huge Thankyou to Natasha our volunteer bookings Secretary for increasing the revenues, as a very busy full time working Mum with 3 daughters and volunteer she has put the VH income on a more sound footing with more visitors from within and outside Reach using and enjoying the Hall.

Sue Elliott Hon Sec

Reach Village Hall Committee 742268

Rosanna's Ramblings

I finished my last ramblings by mentioning that I had to get my book off to my publishers. Well, I sent it off, finally, today ... and immediately started experiencing something Charles has told me about many times. A feeling of flatness, bereftness. Something missing, something lost.



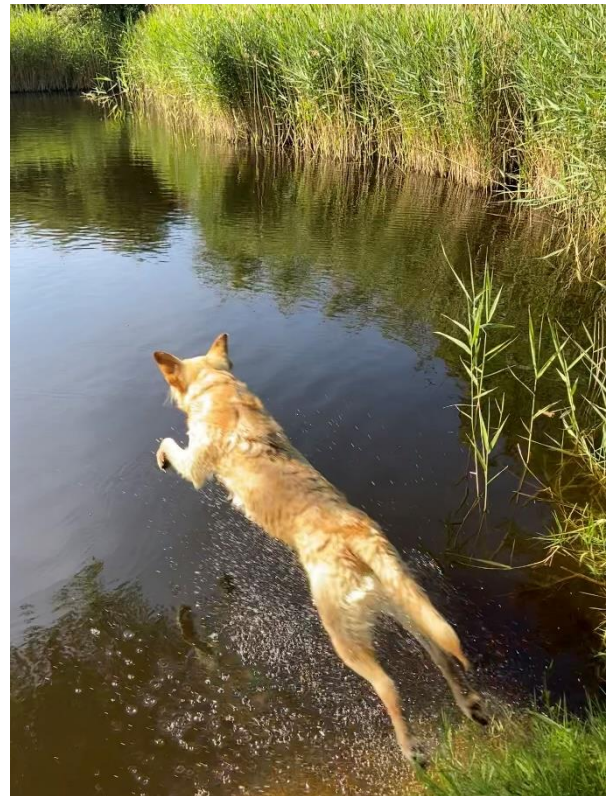
So what better way to antidote this discomfort than to open another Word document and start writing this? At least it means I'll send it off to our editor before he can ask me for it and I can brush up my halo a little. But my mind is a bit of a blur and a bit of a blank. I was awake far too early this morning and when that happens I like to get ahead of forecast hot weather (not in any way a lover of the summer, me) and take Milo out for a walk before 7am if I can. I didn't quite manage it, but certainly we were out on the drove by 7.30am and the sun was already pretty warm.



I decided to turn right after the bridge rather than the more usual left, because the darling dog has an undarling habit of eating, or rather gobbling, dried out cat poo which, by its regular location and quantity is probably produced by Alan's very confident and very large ginger Maine Coon.

He did it yesterday morning, in such an extravagantly immoderate way that I struggled to remember how much I loved him, for a few minutes. He had eaten a generous breakfast just five minutes earlier, so there was simply no excuse other than cussedness and Labrador greed.

Anyway, I didn't feel up to a repeat performance today, so we headed off towards what we call the meadow, but others call the Pocket Park. Knowing that sheep had recently been put there, we grappled with the now rock-hard deep ruts on the drove until we got to the pond. "Excellent", thought Milo, "I'll get a swim!". "Excellent", thought I. "We might manage to get rid of whatever he rolled in yesterday!" So, to the rather concerning sound of a sheep coughing from the next field along – we call it the Heron Field – Milo the Good Labrador Retriever retrieved a stick eight or nine times. And each time, on dropping it by my feet, he of course shook himself so that by the time we'd finished, my trousers were drenched. The joys of dog companionship.



Off we continued, this time along the Lode on the low path rather than the top one and it was awash (wrong word, can't think of a better one) with butterflies. I'm not brilliant at butterfly identification and I could tell that the number of varieties wasn't that great – but there were lots and lots of coppery brown ones with a spot on each wing and some whitish ones. But it was the number that amazed me, knowing how depleted insect life is compared to earlier times. And it made me glad. Milo was oblivious.



We got down to the bridge – we call it the Giverny Bridge because its shape reminds me of the bridge in Monet’s waterlily garden at Giverny and I paused to ponder. Go straight back? – boring. Cross the bridge and walk back? - bit too much into the sun with no shade. Return by the parallel and both deeply churned up AND very overgrown drove to the Lode? – yes, that would do. It reminded me of my favourite morning circuit during the first lockdown.



As soon as we started along the way, Milo charging heedlessly in front of me, me keeping my eyes firmly down in order to negotiate the vegetation-covered hidden dips, the air seemed to swell with birdsong. First there was a skylark, or probably more than one, because lark song stayed with me uninterrupted for a good 15 minutes. Then there was a rusty nail scraping rattling sound that kept repeating really close. I didn’t know what that was, so I turned on the Merlin app on my phone to start a sound ID recording. Of course, as soon as I’d done that, the bird fell silent. But others started up and I watched my phone while the app picked up Sedge Warbler, Reed Warbler, Corn Bunting (all noisy, but invisible). Then the obvious moorhens, pheasants, blackbirds, robins as I got nearer to some trees and drew level to what I call the Muddy Pond (currently, more accurately, just Cracked Mud ...). It was joyous, that small auditory window on an ornithological world that, before getting the Merlin app I’d have just had as a barely noticed birdsong salad in my peripheral hearing.

I was just thinking, as we headed back past the pylons towards the village, what a lovely walk we’d had when two unfortunate things occurred. Firstly, as we approached the bend by Charles’s oak tree, Milo heard an engine and before I could get him back on the lead, he was racing towards the source of the sound (a small, fortunately slow, tractor with a wide bucket at the front) and barking furiously at it. Now, I know that he’s just acting from fear when he does that, but it’s not very helpful and I was grateful to the driver (whose face I couldn’t make out behind the reflection from the window) for stopping and waiting for me to grab my dog. And the second was that somehow, despite my having lost sight of said dog only for a couple of minutes in the whole walk of about an hour, when he disappeared into some undergrowth to chase a hapless moorhen, I noticed that his golden shagginess was entirely streaked with black down one side. And as I approached him, my nose was assailed by the delightful aroma of, probably, fox poo. But in such quantity that it seemed barely to be credited. Oh Milo! I was not pleased.

It took two of us to sluice him down and shampoo him and chase him round the garden trying to rinse him down. And Charles taking him back down to the ponds to have another swim hours later, because the aroma emerging from under his desk from his canine companion was still regrettably ripe. Then I made up a solution of bicarbonate of soda and drenched him with that (good for neutralising smells, although it does make a dog wet again and that smells anyway). Oh, he apparently also snaffled up the cat poo of which he’d been deprived this morning, because Charles made the mistake of walking him home that way.

It’s enough to make a grown woman weep. But at least the honeysuckle in the village seems to be extraordinarily fragrant this summer, but I doubt the dog thinks so.

Rosanna Moseley Gore

Nature in Reach

While we reminisce about last year's drought and scorching highs of 42 degrees, I'm thankful we are avoiding for now, the extreme heatwave covering Europe this summer. However, the weather has felt a little indecisive, blowing quite literally hot and cold. Our newly purchased paddling pool, bought in anticipation of warm weather, has not seen a lot of action. Though hopefully a milder breeding season has generally been kinder on our wildlife.



This year we were lucky enough to introduce some tadpoles to our garden pond, delighting us with a flourishing population of toadlets. Our resident newt, against the odds, seems to have survived last year's drought successfully. The girls are delighted by the baby newts which look to them like tiny axolotls. We wait with anticipation the toads' return to our pond next year, hopeful they don't attempt to navigate back to their birth pond in Cornwall.



A toadlet caught mid jump in a photo by Seren

The woods have gradually come alive with a vibrant display of butterflies which after a slow start seem abundant and diverse this year while the meadow and verges around the wood are rich with wildflowers and hoverflies. Blackberries have begun to ripen, offering plump and tasty treats to entice children out on walks.



Marbled white butterfly on knapweed by Reach Wood

I'm enjoying the swifts' presence in abundant numbers over the village, screaming above the green, though the House Martins don't appear to have returned.

Over to the wildlife sightings captured from May to July 2023, including a majestic adder, courtesy of the keen eyes and dedicated efforts of villagers.

Wildlife Sightings May-July 2023 Joss Goodchild

26.5 Jacquie Lewis mentioned she has 2 lovely song thrushes in her garden.

2.6 Penny Greenhill sent: 'Ron very excited to see the female blackcap having a bath in our pond. We get a lot of birds doing this, some of them in the dog bowl I fill constantly as we think the hedgehog drinks out of it at night. We have been delighted to see the swallows flying low along the track next to John Reed's field, the first time for years and several swifts once again nesting under our eaves'.

4.6 Hilary Fielding spotted a common lizard and has nesting swallows, with young that have successfully fledged, in her stables.

6.6 Brown hares on the tracks and fields at the village edges. Foxes have been seen.

10.6 Penny mentioned 'a beautiful blackcap singing its heart out in our garden this evening. Late, may be a nest'.

12.6 We noted a red kite wheeling over the village, being mobbed by swifts. Song thrush in the garden but sad loss of the tame female blackbird with a long-term severely damaged leg. Goldfinches in the tree and shared bird bath bathing by blackbirds and house sparrows.

Mosquitos, sizeable in the garden, we are plagued by horse flies this summer. Whirligig beetles in the small new pond (they have 2 pairs of eyes to look both above and below the water at the same time). Dragonflies pass through.

12.6 Ron came across a sizeable (2ft.) green adder sun-basking on the path. The following day he enjoyed the song of a Jenny wren singing alongside Reach Wood.

14.6. Kestrel on Jacquie's house roof in Great Lane, evening time.

15.6 Red kite visible above the house again, several sightings this week. The swallows at our field are raising their second brood of young.

Muntjac near Reach Wood, as always. Roe deer in the surrounding fields, the does give birth to twins and triplets and have no natural predators.

Great crested grebe on Tubney Fen water. The stripey chicks riding on the backs of the parent birds. I read they are given feathers to eat to protect their soft stomachs from fish bones.

25.6 Hilary had 'eye to eye contact with a juvenile red kite this morning as it glided back and forth just above the car. We stopped to watch as it gradually came towards us and over the top of the car. So low it cast a shadow on the ground'.

25.6 Ali Kohlman texts to say that (in Great Lane) a young tawny owl was sitting on next door's chimney pot and it looked like the adult bird was flying backwards and forwards to it. It was 'making very odd noises but the bird app picked it up as tawny owls.

The tawny owls are still arriving nightly on various Great Lane roofs. Vocal.

Each evening bats can be seen in Great Lane, certainly fewer than usual.

1.7 Our red valerian plants - a daytime Hummingbird hawk moth sips nectar from the tube of each tiny flower via a long proboscis. Digging wasps are laying eggs in the soil crevices of our brick patio.

6.7 Watched two sparrowhawks vie over a kill on the field track, one mobbed the other.

15.7 All week both male and female great spotted woodpeckers on our peanuts,

15.7 Ron mentioned that the swifts that bred at his barn are still here. He noted many marbled white butterflies in the Reach Wood area. Sadly, he has no frogs at his field wildlife pond.

17.6 Holly blue butterfly on our mature holly tree. Greater number of red admiral butterflies in the garden this year, fewer small tortoiseshells. Peacock, painted lady and the white varieties visit. It's a disaster that 80% of British dragonflies have declined in the past 50 years.

Wildlife Sightings May-July 2023 Nick Acklam

30 May: Although we have been putting fat-balls out for years, it is only recently that local Jackdaws have discovered them. A mob of ten or so birds descend at about 0630 and feed for about a quarter of an hour until all six spheres are consumed. Other bird life avoids the area during these episodes, although on one occasion the jackdaws are joined by a solitary rook. We decide temporarily to stop fat-ball feeding.

4 June: A cuckoo is mobbed by a Blackbird on the east bank of Reach Lode.

9 June: I release a female broad-bodied chaser dragonfly that had become trapped inside our house. My attention is initially attracted by the insect's very noisy (crackling) flight.

15 June: Swallows are taking insects from the surface of Reach Lode by the Pocket Park. The birds splash into the water without becoming immersed, however it is a surprisingly undainty activity.

18 June: A partridge nest has been destroyed within the vegetation by the avenue of willows on the edge of Tubney Fen. Eight or so plain beige eggs have been scattered and opened by, I think, a corvid beak. A slug nestles inside one of the more intact shells.

22 June: Three cuckoos in flight, one of which is calling.

29 June: Two male broad-bodied chasers, with distinctive dusky blue and black abdomens, on reeds by Reach Lode. Dragonfly numbers seem to have increased this year.

2 July: A Silver-washed fritillary butterfly rests on bare earth in our garden. It has striking orange and black markings.

4 July: A whitethroat, visible at the very top of a shrub on the footpath between the Hythe and the 24Acres. It calls occasionally.

6 July: Twenty or so swallows hawking insects just above the fields of barley on either side of Barston Drove allotments. Wonderful aerobatics are on display.

16 July: I evict a female crab spider from our house (it should be outside stalking bumble bees anyway!). It is a luminous light green with two red stripes on its body. Red admiral butterflies are an almost permanent presence in our garden at present.

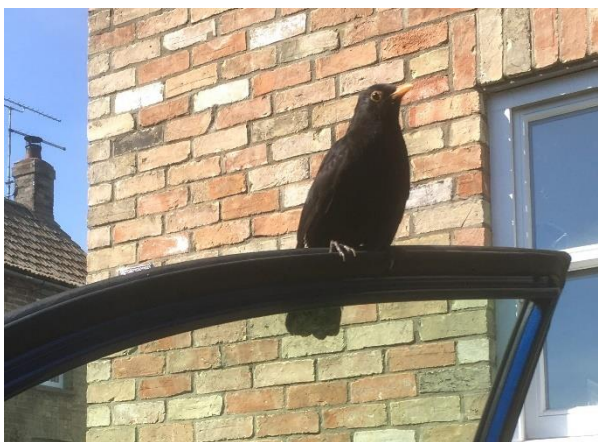
17 July: Swifts are feeding in large numbers over Tubney Fen. Their numbers, here at least, seem higher than in recent summers.

Cath Tayleur

Blackbirds in Great Lane

Whilst it's easy to bemoan the general loss or decline of species in our environmentally challenged world, the same cannot be said for the blackbirds in Great Lane, whose numbers thankfully increase. Not a day passes when sudden braking isn't required to avoid their kamikaze road tendencies.

The blackbird's tuneful song starts our day, the vocal repertoire continues at the garden gate as the daily demand for mealworms begins, two territorial males and a shy female outwit the attention of raucous starlings and house sparrows, all know the sound of the feed bin opening.



Pairs nest in Appletree Cottage and a further scattering of young and old pull worms from Jacquie Lewis' front lawn. Several youngsters were successfully raised in Ali and Tony Kohlman's sheltered garden and Charles Moseley mentioned the presence of 'one-dot', a handsome black cock bird with vibrant white spot. It transpires (because conversations in Great Lane often feature blackbirds), that one-dot is the favourite of many of us. Here he perches on our car door demanding mealworms on the RETURN journey also. Entranced by the presence and social activities of Great Lane's blackbirds I attempted an imaginary record in paint. Celebrating their welcome existence seemed a fitting thing to do.



The active, noisy lives of blackbirds continues, they perch on the salt bin, roof tops, walls, telegraph poles and dot the verges at Little Barn, where their dark feathers contrast beautifully with luminous green Summer grasses. Happily, the track to our field also reveals a further group meeting-place each and every day.

Joss Goodchild

Mobile Library



The mobile library visits Reach on the 3rd Tuesday of the month from 10.10 to 10.30am. This is route F16 and it parks at the Fair Green Bus Stop.

They have a great selection of books for all, free NHS hearing aid batteries and walking stick ferrules. You can join Cambridgeshire Libraries on the bus if you are not already a member.



Bottisham and Burwell Photographic Club

Our club celebrates its 50th Anniversary this year, having formed after a six week photographic course at Burwell Village College. Three founder members still remain in the club, Martin Rushworth, Andy Hanson and Daphne Hanson.

To celebrate, we held an Exhibition at Mandeville Hall, Burwell over the weekend of 20/21 May when members displayed 160 prints and projected 260 digital images, the event being opened by Vic Hainsworth, President of the East Anglian Federation of Photographic Societies. The Exhibition was very well supported not only locally but by visitors from other photographic clubs in the East Anglian area. They enjoyed not only the excellent display of members' work, but also the homemade cakes and scones for sale over the weekend.

We now look forward to our new season which commences on the 12th September. This will be a celebration of last season when we welcome new and returning members and Trophies will be presented to award winners of our annual Print & PDI competitions. Members' prints and projected digital images from last season will be on display during the evening.

In January this year we moved our meetings to Swaffham Prior Village Hall which has turned out to be a very comfortable venue with modern facilities and a car park, which also has disabled parking. As the third Tuesday of every month is already booked, our meetings on that evening will be via Zoom conferencing, the first one being on the 19th September entitled 'Long Exposure Photography' by Joe Houghton.

During the year we have talks ranging from 'Dalmation Pelicans of Lake Kerkin, 'Urban Nightscape Photography', a 'Journey Across Africa' and 'Colour Tones and Textures' to name but a few. We also have our usual Print and PDI competitions and external competitions with camera clubs from Cambridge, Ely and Melbourn.

We meet Tuesday evening from 7.30 pm to 9.30 pm at Swaffham Prior Village Hall (except the third Tuesday in the month) and new members are always welcome. Visitors can attend a lecture for a small entrance fee of £4, which includes refreshments. Our annual subscription is £55 per Adult, £30.00 per Student, plus a weekly attendance fee of £1 which includes refreshments.

For further information please contact our Secretary, Debra Bennett:
secretary.bandbpc@gmail.com or 07722 388770.

Daphne Hanson DPAGB HonPAGB

Wicken Fen



Butterflies and dragonflies are easy to spot if you're visiting on a warm, dry and still day. Gatekeeper, small skipper, painted lady, ruddy darter and emperor are all likely to be on the wing on the reserve in August – above is a RN migrant hawk moth.

Summer family adventures await whether you explore on two wheels by hiring a bike or discover our new sensory trail on Sedge Fen. We've also got some bookable activities if you want to plan ahead and enjoy our nature inspired events: Dragonfly Collage Workshop 23 August, Pond Dipping 9, 12, 15, 21 and 31 August, Summer Buzz Games and Crafts 17 and 29 August.

Meet the Moths – Saturday 12 August 9-10:30am

Drop in and discover more about these mysterious and beautiful night creatures. Come and see what has been found overnight in the moth traps on Sedge Fen, with help from local experts.

Footprints Community engagement

A big thank you to those who came over to White Fen for our BioBlitz last month. We found over 200 species including a white admiral (rarely seen on the reserve) and a male cuckoo.

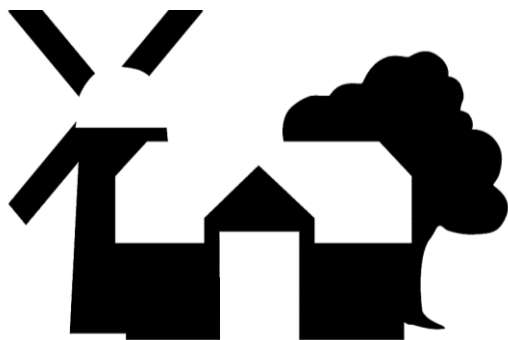
Our wellbeing walks continue every Friday morning from 10-11am. On Friday 11 August we'll be taking the route round the Summer Nature Trail so we can enjoy the beautiful lush tall herb fen and wildflowers. No need to book, meet us in the Visitor Centre a few minutes before the walk starts. See our website for more details.

We're planning some archaeology activity at Reach over the weekend of 14/15 October – if you'd like to help us investigate some test pits, save the date and keep an eye out for more details nearer the time.

For the latest reserve information, please visit our website www.nationaltrust.org.uk/wicken-fen.

Julia Hammond

Burwell Museum and Windmill



As we embark upon the Summer Holidays, here are the events and activities we have to offer in August and September.

CLASSIC CAR AND MOTORBIKE SHOW

SUNDAY AUGUST 20TH

Usual Admission Fees apply

We welcome enquiries to exhibit your classic cars and vintage motorbikes via our email address of burwellmuseum.org.uk until the closing date of Friday August 11th. In addition to the usual full access to the museum and windmill, come along to see these beautiful vehicles and talk with the owners to hear the emotional journeys of ownership and restoration of each vehicle.

HERITAGE OPEN DAY

SUNDAY SEPTEMBER 10TH

A nationally supported event, this year's overarching theme is 'Heritage Creativity Unwrapped'. We have so much local creative craftsmanship as we showcase 'Made in Burwell'. With stalls, experiences, workshops and of course featuring our local food and drink creativity too, Nikki's Homemade Preserves, Burwell Brewery and of course our Tea Room and Bar. Free entry - join us to celebrate Burwell creativity at its Best.

CHILDRENS SUMMER HOLIDAY ACTIVITIES

THURSDAY AUGUST 3RD – THURSDAY AUGUST 31ST

£3 per child fee including refreshments, we will be offering a range of hands-on craft and creativity sessions hosted by Barbara Redman of Burwell Tee Bee Crafts. With Barbara's vast experience of engaging workshops, we will be offering a choice of activities each Thursday, dates as above, always creating something to take away which has been created by each child. Children must be accompanied by an adult. Each craft will take a maximum of 60 mins to complete. Please regularly check our Facebook posts and Website for further details.

AND FINALLY . . .

We could not write this article without mentioning our recent event of 'Back to the 1940's'.

Thank you to all our acts and performers on the day AND a huge thank you to everyone in our audience who came along to sing and swing, dance and dine and reflect that patriotic positivity of the 1940's, we could not have had the atmosphere of this truly inspiring era without you!



See you all soon at Burwell Museum and Windmill!

Sara Phipps of behalf of Burwell Museum Trust

Food Focus

Substantial Summer Salads

When someone says we're having salad for supper my immediate concern is that it's not going to be enough. This certainly applies to other family members too and I can sense the disappointment in the air.

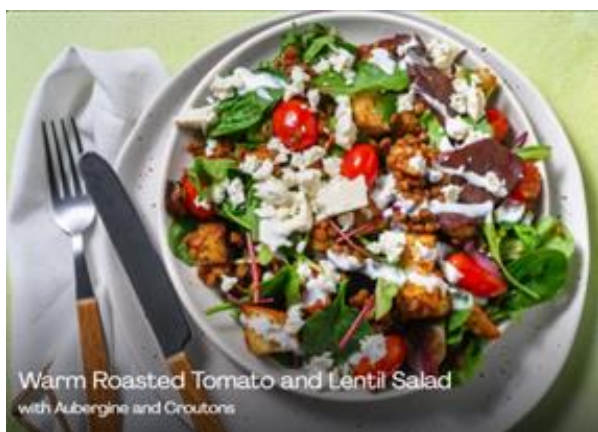


However, there are salads out there that can deliver on the filling front as well as being seasonal and tasty. I'm going to try and demonstrate that here.

This first recipe was given surprising praise by a reluctant lentil eating male in our family.

Warm Roasted Tomato & Lentil Salad

with aubergine, croutons and flaked almonds (courtesy of Hello Fresh).



Ingredients

- 1 aubergine
- 125g baby plum tomatoes
- 1 ciabatta roll
- 1 garlic clove
- Pre cooked lentils tin/carton drained 230g
- Garlic Clove
- 12 millilitre Balsamic Glaze
- 25 grams Sun-Dried Tomato Paste
- 50 grams Baby Leaf Mix
- 50 grams Feta
- 75 grams Greek Yoghurt (not included in your delivery)
- 1 tsp Sugar for the Dressing
- 1.5 tbsp Olive Oil for the Dressing

Method

Roast the Veg

- a) Preheat your oven to 240°C/220°C fan/gas mark 9.
- b) Trim the aubergine, then cut into roughly 2cm pieces.
- c) Pop the tomatoes onto a piece of foil with a drizzle of oil, then season with salt and pepper. Fold the foil, sealing on all sides to create a parcel.
- d) Pop the aubergine onto a large baking tray. Add a generous drizzle of oil, season with salt and pepper, then toss to coat. Spread out in a single layer. Place the tomato parcel alongside.
- e) When the oven is hot, roast on the top shelf until soft and golden, 17-18 mins. Turn halfway through.

Make your Croutons

- a) Meanwhile, tear the ciabatta into roughly 2cm chunks and pop onto another baking tray. Drizzle with oil and season with salt and pepper.
- b) Bake on the middle shelf of the oven until golden, 6-8 mins.
- c) Once golden, remove from the oven and set aside.

Prep Time

- a) While the croutons bake, peel and grate the garlic (or use a garlic press).
- b) Drain and rinse the lentils in a sieve.

Bring on the Lentils

- a) Heat a drizzle of oil in a medium frying pan on medium heat.
- b) Once hot, add the garlic and stir-fry for 1 min.
- c) Add the lentils to the pan and stir together until piping hot, 1-2 mins.
- d) Season to taste with salt and pepper, then remove from the heat.

Assemble your Salad

- a) In a large bowl, combine the balsamic glaze, sun-dried tomato paste, sugar and olive oil for the dressing. Season with salt and pepper.
- b) When ready, add the lentils, roasted aubergine and tomatoes to the dressing and toss to coat.
- c) Allow to sit for 1 min to absorb the flavours.

Finish and Serve

- a) Just before serving, mix the baby leaves and croutons into your salad, then share between your bowls.
- b) Crumble the Feta over the top and drizzle with the yoghurt.

This next recipe is instead of a hot smoked salmon salad recipe which looked delicious, but with most smoked/preserved/pre-prepared meat and fish you can't find a source which is sustainable/MSc/Free range/organic, so I've gone with this crab one instead. I haven't tried it, but you can get MSc crab from Waitrose and it's very good.

Cucumber, Crab and Potato Salad

(courtesy of Waitrose magazine)

Ingredients

- 500g new potatoes
- 2 midi cucumbers
- 1 echalion shallot, finely chopped
- 1 large red chilli, deseeded and chopped
- 1 unwaxed lemon, zest and juice
- 1½ tsp fine salt
- ½ x 20g pack tarragon, a few leaves reserved, remaining leaves chopped
- 4 tbsp extra virgin olive oil, plus extra to drizzle
- 2 x 100g packs Seafood & Eat It Fifty Fifty Crab
- ½ x 80g pack watercress

Method

Put the potatoes in a pan of salted water and bring to the boil. Reduce the heat and simmer for 15-20 minutes until easily pierced with the tip of a sharp knife. Drain well, cut into 2cm slices and return to the pan, off the heat; leave to cool.

Meanwhile, slice the cucumbers on a steep diagonal, about 0.25cm thick, to give long oval slices. Put in a large mixing bowl. Add the shallot, chilli, lemon juice and 1 tsp salt, then toss together. Set aside, giving it an occasional stir.

Once the potatoes have cooled, tip them into the cucumber bowl along with the lemon zest, chopped tarragon, remaining ½ tsp salt and the oil. Add ½ of the crabmeat and ½ of the watercress to the bowl, season and toss together. Divide between plates or shallow bowls and top with the remaining crab. Scatter with the remaining tarragon and watercress, then drizzle over a little more oil before serving.

I'm afraid this isn't tested but I've heard the recipes from this magazine are good and it looks as proper as its name suggests!

Proper Chicken Caesar Salad

(courtesy of Delicious magazine)

Ingredients

- Olive oil for drizzling
- 6 medium skin-on free-range chicken breasts
- 300g sourdough or good quality chewy bread, torn into chunks
- 12 British free-range streaky bacon rashers
- 3 romaine lettuces, leaves separated, large leaves torn in half
- Small bunch fresh chives, roughly snipped
- Parmesan for shaving



Chicken Caesar Salad

For the dressing

- 8 anchovy fillets in oil, drained
- 2 small garlic cloves, crushed
- 3 large free-range egg yolks
- Juice 1 lemon
- 2 tsp dijon mustard
- 150ml light olive oil
- 4-5 tbsp grated parmesan (to taste)

Method

Heat the oven to 200°C/180°C fan/gas 6. Heat a frying pan over a high heat, add a drizzle of oil and when really hot, season the chicken breasts and put them in the pan, skin-side down. Fry for 3-4 minutes until golden underneath, then flip them over and fry for a minute. Remove and set aside.

Toss the bread with another drizzle of olive oil in a large roasting tin, then spread out in a single layer. Sit the chicken breasts among the bread pieces, season, then lay the bacon slices over the bread. Transfer to the oven and roast for 20 minutes or until the chicken breasts are cooked through. Remove the chicken breasts, toss the croutons and bacon slices around then cook for 10-15 minutes more until the croutons are deep golden and the bacon is crisp. Remove and set aside to cool slightly.

Meanwhile make the dressing. Put the anchovies, garlic, egg yolks, lemon and mustard in a pestle and mortar or small food processor. Pound or whizz to a coarse, thick paste. While pounding, or with the motor running, slowly drizzle in the olive oil, so the sauce thickens to the consistency of runny mayonnaise. If it starts to look greasy at any point, add a splash of water. Once you've added all the oil, stir through the grated parmesan, taste and season – it may need a bit more lemon juice. If it's too thick to drizzle, add a little cold water.

Slice the chicken breasts. Arrange the lettuce leaves on a wide platter, then scatter with the croutons, torn bacon and chives. Use a vegetable peeler to shave parmesan over the top, then drizzle over half the dressing and top with the sliced chicken. Drizzle over the remaining dressing, then serve while the chicken is still warm.

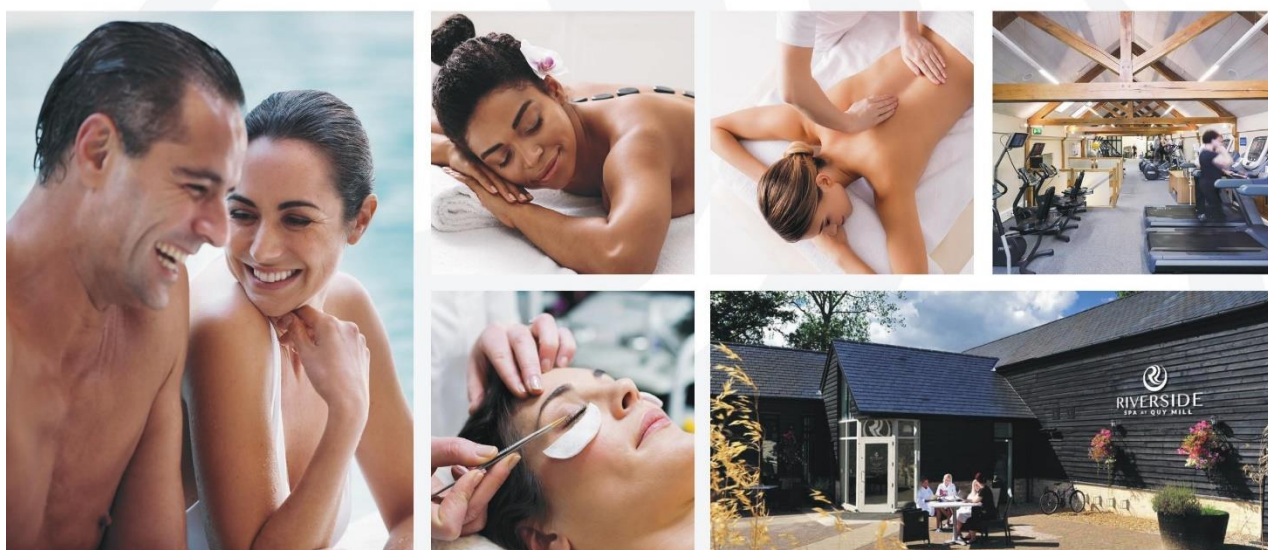
Catherine Gibson



RIVERSIDE

SPA AT QUY MILL

Revitalise and refresh at our tranquil spa in Cambridge



Enjoy our wide range of relaxing and revitalising treatments and experiences at our luxury Riverside Spa based at Quy Mill Hotel.

Escape from the stresses and strains of modern life with a massage, beauty treatment or experience our cleansing serail mud chamber. We use Elemis and OPI products as part of our service. Step into your own world where you can lounge, swim, indulge or simply let the world go by.

ELEMIS

BOOK YOUR VISIT NOW

O·P·I

OPENING HOURS

Monday to Friday 7am – 9pm
(Spa 9am – 8pm)

Saturday & Sunday 8am – 8pm
(Spa 9am – 6pm)



01223 293383
riversidequymill.com



Tales from a Reach Garden

We have had one of the hottest and sunniest months of June that I can remember – it was much too hot and bright to stay outside in the heat of an afternoon. The hot weather was useful because last winter had been so long and cold, that spring was rather late to get going. The plants we had started growing in the garden in April/May, that had such a slow start in spring, really benefited from the heat in June, so the soft fruit and vegetables have been harvested when we expected them to be and they've cropped well so far.



I was concerned that if June was hot, then July would be even hotter. Well, not here it isn't (so far) – though the southern half of Europe is struggling with exceptionally hot July temperatures yet again. This is not good news for fruit and vegetable growers around the Mediterranean and will have a knock-on effect on food prices, (which is a very good reason to try to grow your own!) My Italian relatives grow tomatoes, peppers and cucumbers under cover (plastic or glass) and it becomes unbearably hot working there when the temperature is more than 25°C outdoors, so in normal summers any planting, pruning, harvesting etc., is carried out at dawn or just before. Then produce is packed (in the shade) up to 8am. The conditions now are hellish even at night.

Our climate is changing - and we need to adapt though it is very unpredictable. Who would have predicted after our own exceptionally hot summer last year and June this year that we'd be more concerned about the cool, damp conditions we're experiencing this July? Our damp July weather does feel more like a "traditional" British summer (well, OK, a Mancunian one) but our pea and runner bean crops are enjoying these conditions.



In an effort to mitigate the impact of unpredictable weather I try to grow different varieties of the same type of vegetable in each plot, where possible. For instance, this year, I'm growing three types of climbing beans: a traditional runner variety, "Firestorm" (see previous pic), and French climbing varieties "Cobra" and "Monto Gusto". In hot dry summers the French Climbing varieties crop prolifically and the traditional English varieties drop their flowers or run to seed. I've chosen "Firestorm" because after several years of trying different varieties of traditional runner beans, it's one of the more reliable ones; however, even this variety struggles with temperatures above 30°C. This year the runner beans are full of flowers with beans growing steadily and it is popular with the bumble bees. Of the other varieties, we've started picking the yellow pods of Monto Gusto, but the Cobra beans have put out flowers and beans are growing, but not yet ready to pick - they prefer warmer temperatures.



The start of a second crop of Kelvedon Wonder

Another way of coping with the vagaries of the weather is to try succession cropping. This is particularly useful with peas. It involves sowing a row of peas about two to three weeks after the previous row. We also plant mangetout and sugar snap varieties in the same bed. Last year we almost gave up with the peas because the weather was too hot for them to grow properly through the summer. They were almost overwhelmed by thrips and the pods which hadn't been attacked, dried out before they had filled out properly, then the plants wilted and died. The mangetout and sugar snaps coped better with the hot weather. Richard wondered at the time if it was worth growing peas at all because the yield was so poor (he said the same about our winter-blasted broccoli too). I did wonder if it was worth switching to chickpeas or doubling the broad beans instead, but I thought I'd try again but sow them earlier.

This year the first row of peas (Kelvedon Wonder) was sown early in March indoors, because the soil where it was to be planted was still very cold. Then as the plants put out tendrils they were planted outdoors - I had my fingers crossed at the time because the soil was still cool, but peas (like broad beans) cope better with cool conditions than many other crops and these flourished once they were planted outside (after being hardened off), they just needed protection from the wind. This first crop of peas was picked in June and earlier this month the other rows of peas have also cropped, been picked and eaten. Meanwhile the plants in the first row of peas put out flowers again as the weather cooled. We should be picking a second flush from these plants as soon as the pods are ready. We're also picking our second flush of mangetout and sugar snaps.

There are ways of dealing with our unpredictable weather, seed companies are always introducing new varieties, so I do try them out, as well as using old favourites. Though I do wonder if we'll be growing completely different vegetables in the future, after all potatoes and tomatoes were novelties once.

Danuta Gibson



Letter from the Vicarage

Introducing Revd Virginia Moggridge! Virginia was ordained deacon at Ely Cathedral on Sunday July 2nd and will be spending three years or so with us, in the Church of England parish of Burwell and Reach. She would love to meet people and will be spending time over the next few months getting to know our villages, so please say hello and have a chat with her.



Revd Virginia Moggridge

Coming up over the next few weeks

Café Church @ St Mary's

Café Church is usually the first Sunday of the month, beginning with refreshments, time to chat and themed activities, followed by a short service. Next dates are 6th August and 3rd September.

Fun Fridays @ St Mary's

During the summer holidays we will be holding some Fun Fridays for families: 10am – 12.30pm at St Mary's, with outdoor and indoor activities, alongside our Refresh Café toddler area. Refreshments will be available, including a simple lunch. For more information about these and other activities for families, get in touch to join our mailing list.

September Specials

During September the church's year turns to focus on the natural world and harvest. We will be holding a Climate Sunday service and Harvest Festivals. We're also hoping to hold another Open Day at St Mary's, with Tower Tours, weather permitting and a chance for more in depth exploration of St Mary's church and churchyard. Look out for more details nearer the time.

Burwell Food Hub at Burwell Day Centre

There are now two weekly sessions: Wednesday Pantry 10.00am – 12.00pm with short life fresh food items and Friday Pop-up Pantry 2.00 – 3.00pm, also with fresh food, cupboard basics, toiletries & hygiene products. Anyone in financial need is welcome to access support, without a voucher, to help them get back on their feet. We are also glad of donations of in-date items that could help others out and are pleased to be part of schemes to help reduce food waste from local supermarkets. Ely Foodbank has also been operating alongside, with a weekly Foodbank Centre. Check on social media for the latest updates or get in touch if you would like help to access support.

Finding out more

To find out more about what's going on at St Mary's or St Etheldreda's in Reach, please see our Facebook pages and website. Most weeks, we aim to livestream our weekly 10am Sunday service on Facebook. Refresh Café is our group for babies, toddlers and their grown-ups, which meets on Friday mornings at St Mary's from 10.00am, with a simple sandwich lunch from 11.30am. We offer a very warm welcome to any little ones and their parents/carers, and continue during the August school holidays, welcoming older children as well for these extended sessions. Messy Church has a regular pattern of Sunday afternoon gatherings, and we welcome families with children of all ages who want to have fun, explore faith & share a meal. All Ages, All Welcome. Please get in touch if you would like more information about these or any of our events or services, including weddings, christenings and baby thanksgivings, or if you would value an opportunity to chat.

Revd Canon Dr Eleanor Williams, Vicar of Burwell with Reach

01638 741262

vicar@stmarysburwell.org.uk

www.stmarysburwell.org.uk

www.facebook.com/stmarysburwell/

Reach Church Development

We hope many of you will be able to join us on Sunday 30th July 2023 when Bishop Dagmar, Bishop of Huntingdon, will join us for the official opening and re-dedication of the church. This is Bishop Dagmar's first visit to Reach and it would be good to give her a warm welcome.

Pat Chalmers on behalf of Reach Development Group
administrator@stmarysburwell.org.uk

CELEBRATING COMPLETION OF THE REFURBISHMENT of ST ETHELDREDA'S REACH

*with special guest
The Bishop of Huntingdon
Sunday 30th July 2023
at St Etheldreda's Reach*

**10.00am Communion
Service**

**11.15am Refreshments
& Dedication Ceremony**



Cricket Report

A decade ago Reach Cricket Club consisted of half a dozen old codgers and a ploughed field. Now reinforced with enthusiastic youngsters, our light blue caps are a feared sight in the cricket grounds of Cambridgeshire. Last year we made the step into competitive cricket by entering the Haverhill and District midweek league – we may not be near Haverhill but that is where the vacancy was. This year we went further and joined the midweek cup as well. We would have a bit of fun, but surely we couldn't go on and win the thing, could we?

Our first-round victory, in the generously vegetated pastures of Great Chesterford on 10 May, was covered in the last issue of *Within Reach*. The next round, on 14 June, took us to Ickleton, where we feasted on the bowling, scoring 145 for 7 off our 20 overs before bowling out Ickleton for 82. The prize was a trip to Balsham rec, where we repeated the performance, scoring 174-6 and then bowling out Balsham for 107, thanks not least to four wickets from Ben Cooke.

Suddenly we were in the final, exposed to the kind of publicity and pressure we had never before encountered. After modelling a specially tailored collection of Burton suits, recording the team song (a cover of 'Reach' by S Club 7) and a week-long training camp along with WAGs at a five star hotel in Dubai, we headed to Dullingham for the final against Fulbourn on 20 July. Could we pull off a David vs Goliath victory against a team which had defeated us on each previous occasion we had played them?

Fulbourn won the toss and chose to bat. After half an hour (when the delayed reporter from *Within Reach* arrived) they were 38-2 off 8 overs. It wasn't good, it wasn't bad, about par for the course on a bouncy wicket. Life began to change however, when Ben Cooke was brought on and hit the sticks with his first ball. Three balls later he had another and the match began to turn in Reach's favour. After 14 overs the score stood at 90-5 and the batsmen were swiping and missing, failing to get the hang of Ben Cooke OBE, who quickly took two more. Meanwhile, Lewis Jarman was brought on at the other end and promptly took a wicket with his first ball, too. The run rate slowed down and the scoring shots became messier – partly due, a little worryingly, to fading light. Quick reactions by Sir Benjamin Cooke saw the non-strike batsman run-out, having been too eager for a run. By the time Sir Benjamin had wrapped up the Fulbourn innings with a wicket maiden, the score stood at 125 – respectable though far from invincible.

We didn't have the best of starts, with our leading run-scorer Tim Davies caught and bowled for a duck. It rapidly got better, though, especially when Will Kingsmill came to the crease.

Ten runs and two balls seemed to swing the game in our favour. The bad light was acting in our favour, Will being dropped a couple of times. After 9 overs we were 64-3 – more than halfway to our target with 11 overs to go. After 13 overs we were 94-6 – our required run rate down to a shade over four an over.

By now, however, the only thing illuminating the pitch was the scoreboard, along with a pair of bails which flashed yellow and red whenever they were dislodged – by which time, by definition, it was too late for the batsman to react. By the 16th over we were 103-7, requiring just under a run a ball. When Lord Cooke of Reach struck a four, that seemed to send the game a little our way. Then, James Henderson fell, leaving us 111-7 off 17 overs. But what was this – another four from Lord Cooke, or indeed the Duke of Reach, as he had just become. Now we needed just six runs, with 12 balls to do it.

Then, tragically, the Duke was bowled, narrowly depriving himself of elevation to the Order of Merit. But Reach weren't quite finished; there was still our 11th man, Connor Benton to come. But then it really was all over. Connor was bowled in the darkness and the fairy tale was over; we had lost by five runs. Our hopes were extinguished, biblically, with a downpour. But it had been an admirable performance from Reach, with tight-fielding, good bowling and some daring batting in difficult circumstances.



A dejected Reach team after the match



Ewen Cameron collects his consolation prize

Ross Clark

Know Your Parish Council

Your Councillors are:

Charlotte Cane	Vice Chair
Cristine Fletcher	Chair
Catherine Gibson	Councillor
Edward Hall	Councillor

There are currently 3 vacancies, please contact Susan Bailey if you are interested in being co-opted onto the Parish Council.

Charlotte Cane	District Councillor
John Trapp	District Councillor
Joshua Schumann	County Councillor

Meetings take place in the **Village Hall** on the first **Tuesday** of each month. They start at **7.00pm** and all Reach villagers are welcome to attend.

Your Clerk is **Susan Bailey**
29 Great Lane Reach CB25 0JF 01638 743794
clerk@reachparishcouncil.org

Know Your District Councillors



There will be a Youth Fusion Event at Bottisham Sports Centre on Wednesday 9 August 2023. Anyone aged 18 or under is invited to attend this free event taking place between 11am and 3pm. This interactive wellbeing event is an opportunity to find out what is going on for young people.

As well as fun activities such as a climbing wall, Korfeball and a bouncy castle, there will also be the chance to find out more about the clubs and organisations operating in East Cambridgeshire. A bike mechanic will also be available to offer advice on bike maintenance and carry out basic repairs on the day free of charge and the police will be offering bike security marking.

This event is part of the Council's Youth Engagement strategy which was discussed at the Operational Services Committee in June. We also agreed the updated Environment Plan with the actions for the current year. The plan commits East Cambs to reducing the carbon from its operations by at least 80% by 2030. This is a welcome, but challenging target and there was no clear plan to achieve it, so we supported an amendment calling for officers to draft a plan for achieving the target. The meeting reviewed the finance report for the Committee's areas of responsibility and noted a revenue overspend of £742,000 – 13% of budget. Just under £500,000 of this overspend was the increased fee to ECSS for waste collections. There was an almost £3million underspend on capital, due to delays in programmes – notably the Disabled Facilities programme. In response to her question Charlotte was assured that the Council were taking actions to try to get this programme back on schedule, so that people with disabilities can have adaptations to their homes.

We also had a presentation from Voluntary and Community Action East Cambs. They are based in Ely, but they are happy to help around the District – they offer a community transport scheme and a gardening scheme for people who need help with their gardens. If you need help with transport and the village schemes cannot assist then contact 01353 666553 or email carscheme@vcaec.org.uk. If you need help with your garden contact 01353 666556 or email gardening@vcaec.org.uk.

At the Council's Annual meeting Cllr Mark Goldsack was elected as the Chair. John is on the Finance & Assets, Planning and Licensing Committees and the Licensing Sub-Committee (non-statutory). Charlotte is on the Licensing and Audit Committees and the Licensing Sub-Committee (statutory). John is the Lib Dem lead member on Licensing and Charlotte is the lead member on Audit.

The Greater Cambridge Partnership (GCP) has published the responses to its consultation on better public transport and congestion charging. Whilst more than 70% of people were in favour of the future transport network, 58% of people were opposed to paying for it through the Congestion Charge. The full report can be seen at [MC22-consultation-report \(greatercambridge.org.uk\)](https://www.greatercambridge.org.uk/mc22-consultation-report). Just 1,061 of the respondents were from East Cambridgeshire. Franchising of bus services would help by bringing routes, timetables and fares under public control, but would need a reliable source of income to fund it.

The Greater Cambridge Partnership must think again and find an acceptable way to fund the public transport improvements local people want and need.

Finance & Assets Committee in July noted that the Council as a whole had a revenue underspend of almost £2million and a capital underspend of almost £2million. The Committee appointed people to outside bodies and John was appointed to the Swaffham Internal Drainage Board.

The Combined Authority's Overview and Scrutiny Committee met in June and elected Charlotte as their Chair. The Committee had the opportunity to question the Mayor and his teams about their plans for Cambridgeshire. There is a new senior management team and they are planning to move initiatives forward, including supporting skills training and better public transport.

Because of the Bank Holiday on 28 August, the waste collections in that week will be one day later than normal. We hope you all enjoy the Bank Holiday weekend and the Summer holidays.

There is no 'Meet your Councillors' in August because of holidays. The next meet your Councillors is on Wednesday 20 September at 6.30pm at Brinkley Memorial Hall.

Charlotte Cane and John Trapp

charlotte.cane@eastcambs.gov.uk 07976 607512
john.trapp@eastcambs.gov.uk 01223 812120

Reach Community Solar Farm

The Reach Village Hall Committee would like to thank the Board and Shareholders of the Reach Community Solar Farm for their generous grant to fund a specialist, technical report on how best to decarbonise the heating and lighting of the Village Hall.

The committee are currently investigating the options to generate and store power to help maintain the hall as a warm and welcoming environment for the village for years to come. This project is not straightforward and having high quality, professional advice is invaluable in supporting our investigations and decision making.

Andrew Trump

New Gant Farm, Swaffham Prior Fen, Cambridge, CB25 0LQ

[Ed:] And don't forget that anyone can apply for a Grant from RCSF – to download a Grant Form please go to:

<http://reachsolarfarm.co.uk/documents.html>

Neighbourhood Watch

Are you clued up on OTPs? That's right, one-time passcodes! Those annoying messages that pop up every now and again asking you to verify an online purchase.

As irritating as they can be when you're trying to complete a transaction, these passcodes – which are usually sent to your mobile phone via text message – provide a vital defence in the fight against fraud to ensure thieves and scammers can't make purchases with your card details.

However, fraudsters have discovered a workaround and are now calling customers pretending to be from the bank or a trusted organisation, such as the police, requesting OTPs, which they can then use to make a fraudulent transaction.

June saw the highest number of suspected OTP scams nationally and there have been just over 3,000 successful scams reported in the last six months, 57 of which were in Cambridgeshire.

Remember, your bank will never ask you to share an OTP, neither will we. Keep them to yourself!

Interested in Volunteering or do you have Volunteer Vacancies?

Individuals can start their search by using www.vcaec.org.uk where you can download forms - or you can come and see us in our offices at the rear of Centre E in Barton Road, Ely, CB7 4DE.

Our opening Hours: Mon to Thur 9.30 – 12.30 pm
Tel: 01353 666166 or email volunteers@vcaec.org.uk

We also run two volunteering projects from our offices:

The Social Car scheme – which has volunteer drivers who take people to appointments; Ring 01353 666553 or carscheme@vcaec.org.uk .

The Helping Hands Gardening scheme – which assists people with their gardens when they are no longer able to with the aid of volunteers. Ring 01353 666556 or gardening@vcaec.org.uk .

We also **assist local voluntary groups** with funding, training etc, etc. Ring 01353 666166 or info@vcaec.org.uk .

Parish Council Meeting Minutes

Minutes of Reach Parish Council meeting held at in the village hall on Tuesday 6th June 2023 at 7.00pm.

Attendance

Cris Fletcher	Chair	Present	Susan Bailey	Clerk	Present
Charlotte Cane	Vice Chair	Present	Charlotte Cane	District Councillor	Present
Catherine Gibson	Councillor	Present	Joshua Schumann	County Councillor	Not Present
Ed Hall	Councillor	Present			

Apologies for absence - Approved.

Forum for members of the public.

Nick Acklam attended the meeting to discuss the Clutch pit and the tree inspection.

Declaration of Interests

There were none.

1. Planning

There was none.

2. District Councillor Report

At the Council's Annual meeting Cllr Mark Goldsack was elected as the Council's Chair. John is on the Finance & Assets, Planning, and Licensing Committees and the Licensing Sub-Committee (non-statutory). Charlotte is on the Licensing and Audit Committees and the Licensing Sub-Committee (statutory). John is the Lib Dem's lead member on Licensing and Charlotte is the lead member on Audit and Deputy Group Leader.

All the Chairs and Vice-Chairs are Conservatives, which is not surprising as they have 15 Councillors to the Lib Dems 13. What is surprising, is how little they have shared these roles around their Group. Cllr Julia Huffer Chairs the Operational Services and Licensing Committees; Cllr Alan Sharp is Chair of Finance & Assets and Vice-Chair of the Operational Services Committee; while Cllr David Brown will be particularly busy as Vice-Chair of Council, Vice-Chair of Planning and Chair of Audit.

The Greater Cambridge Partnership has published the responses to its consultation on better public transport and congestion charging. Whilst more than 70% of people were in favour of the future transport network 58% of people were opposed to paying for it through the Congestion Charge. The full report can be seen at [MC22-consultation-report \(greatercambridge.org.uk\)](https://www.greatercambridge.org.uk). Just 1,061 of the respondents were from East Cambridgeshire. Franchising of bus services would help by bringing routes, timetables, and fares under public control—but would need a reliable source of income to fund it. The Greater Cambridge Partnership will need to think again and find an acceptable way to fund the public transport improvements local people want and need.

We continue to lobby for the number 11 bus to stop at Bottisham. The reason given for removing Bottisham is that having the subsidised number 11 bus stop at Bottisham would risk the commercial viability of the number 12. We are pressing for the number 11 to stop at Bottisham, and after his recent comments about needing bus services to get to GPs, have taken the issue up with Mayor Johnson.

ECDC are planning on holding a youth Event on Wednesday 9 August at the Bottisham Sports Centre. The event will have people from local groups, clubs, activities, and initiatives e.g., climate change, community safety and activities, e.g., martial arts, dance, climbing walls. Its open to all young people in the area.

Operational Services Committee will meet on 19 June and should discuss the Community Safety Partnership and Youth Action Plan as well as the Environment Action Plan. It will also allocate places on outside bodies – John has been nominated for Citizens Advice West Suffolk and Sanctuary Housing and Charlotte for Historic England.

Because of the Bank Holiday on 28 August, the waste collections in that week will be one day later than normal.

3. County Councillor Report

None received.

4. Minutes of previous Meeting

May PC meeting and Annual Parish meeting minutes approved as correct.

5.1 Reach Grant Fund

A request had been received from the Cricket club for match funding of up to £150 for replacement to the gatepost of the main gate of the 24Acres entrance. Approved.

5.2 Finance

Nothing to report.

5.3 Parish Council Members

Nothing to report.

5.4 Play Spaces

The handover had been completed from David McMillan to Councillor Hall. Nothing to report.

5.5 Rights of Way

Nothing to report.

5.6 24Acres Committee

Nothing to report.

5.7 Neighbourhood Plan

At Reach Parish Council Meeting on the 4th April the Neighbourhood Plan was presented to the Parish Councillors for approval and submission to ECDC. A number of villagers attended, both in support of submission and against it. Following discussion, the PC decided to defer the decision to submit the plan to see if a mutually agreeable way forward could be found which would satisfy all parties. It was decided that another meeting would be held 2 weeks later whereby the 'deferral team' could put forward any possible proposals developed in the time.

At the same meeting one building was removed, as requested by its owner, from the "Buildings of Local Significance" - an element of the Local Heritage Assets Survey. All the other changes in the consultation statement were approved.

At the extraordinary meeting on 27th April there were further representations from the public. The deferral team reported that there was not a way to resolve the issue & please everyone. After further discussion, the Parish Council approved the decision to submit the Neighbourhood Plan to ECDC.

People for Places have been instructed to submit the plan as soon as possible to ECDC (along with supporting evidence, the Basic Conditions & Consultation Statements). The Locality Grant Annual Report for our funding over the last calendar year has been submitted by the Neighbourhood Plan Chair to Groundwork UK (the accountable body for Neighbourhood Plan funding).

Upon receiving the submitted Neighbourhood Plan proposal the local authority will publicise it and invite comments (six weeks). These comments will be sent subsequently to the independent examiner for their consideration.

It is the responsibility of the local authority to organise and cover the costs of the independent examination and referendum. The independent examiner will be appointed by the local authority with the consent of the qualifying body.

The independent examination will consider the submitted documents and any comments made during the consultation period on the submitted plan proposal. The independent examiner will examine whether the plan meets the 'Basic

Conditions' & other relevant legal requirements (e.g., consultation). The independent examiner may recommend that the plan proceed to the referendum stage (i.e., it meets all the legal requirements) or may suggest that modifications are needed to the plan before it can proceed to the referendum.

5.8 Friends Of Reach Wood

Nothing to report.

5.9 A to B1102 Group

Nothing to report.

5.10 Reach Fair

An extract from the full report by Alex de Giorgio-Miller

With all the planning complete and the rain staying away, the Fair took place. It was a lovely day and much enjoyed. Of course, the Fair is opened by the Mayor of Cambridge and pennies are thrown to the crowd. This year everyone in the mayor's party received a posy, prepared by Anne Emmett, and assisted by Debbie Quilter and children from the village. The posies evoke an old Reach Fair tradition and had the colour theme of red, white, and blue in recognition of the Coronation. The Maypole Dancing by the children of Swaffham Prior School was spot on. It was lovely to watch the children thrilled by the sheer joy of dancing. Both stages entertained the visitors across the long afternoon with people sitting bathed in sunshine.

We welcomed back the ever-popular dance troop Performance Without Limits and Tang Soo Do martial arts. It was the second year back for Graham Buxton who played on Fair Green. Having completed several gigs elsewhere over the weekend Graham remained full of energy and gave it his all. Much to the delight of his fans. Jezo has been coming to Reach Fair for many years and this year his contribution was outstanding with magic shows, comedy, and a tug of war. Jezo also arranged a Punch and Judy show at short notice. We are grateful to all our contributors: Newmarket Explorers (on the village games), Swaffham Prior and Reach Scouts (the BBQ) and the Sea Cadets (the car park). A mention should also go out to Pat Chalmers for organising the delicious Cream Teas in the newly refurbished church. Great, also, to have the Bookstall.

Lastly, we thank the villagers of Reach, for their outstanding support and assistance leading up to the Fair, the day itself, and the clearing up thereafter. So many villagers and their families and friends contribute to the success of the day that it makes all the angst worthwhile.

INCOME - £22,241

COSTS - £14,474

PROFIT - £7,767

To carry forward in Fair bank account (to cover early costs for next year) - £3,000

Total to Grant Fund - £4,767

6. Approve Annual Governance Statement

Approved.

7. Approve the Accountancy statement

Approved.

8. Play spaces yearly safety report

The yearly safety inspection had been carried out and had found the entire playground and swings on the Green were low risk, and no repairs or maintenance required.

9. The Clunch Pit – transfer of ownership

Nick Acklam gave the new Councillors a brief history of the Clunch Pit & the transfer of ownership, which is still ongoing. HM Land Registry have requested an independent survey to be carried out by an Ordnance Survey surveyor, this would cost £40. **Clerk** to liaise with the solicitor and **Nick Acklam** to complete the OS online form & arrange an onsite meeting.

10. Tree inspection report

A yearly report had been received from the Tree officer. The key points arising are:

1. No immediate threats to public safety were identified. Thankfully ash die back has not had a visible impact on the trees of the inventory.
2. Action is recommended on the following:
 - a. Cherry on the Hythe (11) The trunk bifurcates at head height. One of the trunks is now completely dead. It appears stable at present, but the tree is in decline and intervention will be required at some point. Following the inspection of late 2021, ECDC's Tree Officer visited and stated that the tree presented no threat to the public. We agree with this assessment for now but ask that the Tree Officer is asked to revisit to confirm that he remains content with his previous assessment. The PC should also seek his view on the cost-effectiveness of removing the dead trunk. Would this action prolong the life of a tree or would felling, and replacement represent a better option?
 - b. Cherry on the Hythe (6) . Removal of dead lower branches. As with tree 11, this cherry appears to be in decline. We may wish to consider felling and replacing in the next few years.
 - c. Cherry seedlings on the Hythe. These are not (yet) part of the inventory but will soon become so. The seedlings provide shrub cover for songbirds and, for most of these we advise monitoring but no action for now. However, we recommend removal of four seedlings closest to the pedestrian bridge as these interfere with oak (7) and the amenity value of the Catchwater bank, particularly for boaters.
 - d. Elder on the Hythe (21). This has died and needs removing.
 - e. Cherry at the cemetery (56) . Prompted by a villager, we recommend raising the canopy of this tree by 600mm to reduce leaf fall onto graves.
 - f. Coppiced lime (53) and standard lime (68) at the cemetery edge. We recommend pruning of growth overhanging neighbouring properties.
 - g. Lime (60) on cemetery edge. We recommend clearance of shrub growth at the tree's base.
 - h. Ash trees on the playground (28, 29 and 30). These are large trees and, whilst in generally good health, all have dead branches overhanging public space which should be removed.
 - i. Lime (25) at the top end of Fair Green. This tree was vandalised many years ago. It is now growing robustly but needs pruning into shape and a canopy lift to facilitate mowing of the Green. Previously approved and to be work carried out.

j. The elm (30) in the playground which we identified as being of particular significance in 2021 has yet to be formally listed. My efforts last year to engage organisations that might list the tree did not elicit a response. If the PC remains content, I will resume the search for organisation prepared to list this significant local tree.

k. The trees of the Drying Ground and the Clunch Pit are not currently included on the inventory pending confirmation that the PC owns or is responsible for the land in question. We suggest waiting for a response from the Land Registry before surveying the Clunch Pit & perhaps adding its trees to the inventory. It was intended that the Drying Ground would be confirmed as Local Green Space stewarded by the PC in the draft Neighbourhood Plan. Given continuing delays in bringing the NP to referendum and the fact that the PC took defacto responsibility for dealing with storm damage to a tree on the Drying Ground last year, we now recommend bringing the trees of the Drying Ground onto the inventory.

All items Approved, **Clerk** to arrange for a tree surgeon to meet with the Tree Officer and give a quote.
Tree Officer to continue with item j and k as detailed.

11. **New officers - village hall officer, Swaffham Prior Parochial Charity & AtoB1102 Representative**

Village hall officer – Councillor Cane, proposed by Councillor Fletcher, seconded by Councillor Hall, Approved.
Swaffham Prior Parochial Charity – Nick Acklam, proposed by Councillor Fletcher, seconded by Councillor Hall, Approved.

AtoB1102 representative – Andrew Trump, proposed by Councillor Fletcher, seconded by Councillor Hall, Approved.

12. **Setting up the Grant Fund as a charity**

Following the setting up of a CIC to the running Reach Fair, it is necessary for the Grant fund to become a Charity to receive funds from the Fair free of tax. **Councillor Hall** had completed a document and needs to obtain signatures of the future Charity members. Councillor Fletcher felt it would be a conflict of interests for a member of the Fair Charity to also be part of the Grant Fund Charity. It was therefore proposed that members of the new Charity should come from the PC, the Village Hall Committee and The Events Team. **Councillor Hall** to also arrange for a bank account to be set up. The new Charity needs to be ready to receive funds by September.

13. **PC website page**

Following discussion, the PC agreed that the PC page of the village website should include photos of the Councillors and their Council email address, but not personal telephone numbers. **Councillor Hall** to obtain a new sim account for the PC, with the phone number being listed as a contact for the Clerk.

14. **Litter picking initiative**

The PC is to receive some free litter picking equipment for the use of local residents, from ECDC. There is a competition between Councils as to who can collect the most litter, it was felt Reach was too small a Parish to take part in this. The PC however are keen to see a litter picking initiative set up within the village. **Clerk** to send round an email asking for volunteers to set up and run such an initiative, **Councillor Fletcher** to post on Facebook.

15. **Land hire, including 24Acres**

The PC had received a request for the use of the 24Acres by a boot camp activity. The 24Acres committee were against this due to disturbance for wildlife and other users, parking issues, health and safety etc. The lease of the land from the NT also prohibits the use of the land for business use. **Clerk** to inform the enquirer this was not allowed by the lease and impractical. Another request had been received asking to use the playing field as a site to run a vintage and craft fayre. The PC were against this sort of use of PC land unless it was connected to the village. **Clerk** to inform the enquirer.

16. **Footpath obstructions**

A resident had contacted the PC with regard to an obstruction making passing difficult for pushchairs on a footpath beside the Lode. CCC highways are responsible for footpaths, **Clerk** to inform the resident.

18. **Payments**

CR Contracts – Mowing contract	£360.50
Play spaces yearly safety check	£144.00
David Parr – Coronation event – Grant fund	£ 952.50
Balfour Beatty – Streetlight maintenance	£393.60

REACH VILLAGE HALL AGM MONDAY 25 SEPTEMBER AT 8PM.

Please come along all welcome.

WE NEED YOU !

Minutes of Reach Parish Council meeting held at in the village hall on Tuesday 4th July 2023 at 7.00pm.

Attendance

Cris Fletcher	Chair	Present	Susan Bailey	Clerk	Present
Charlotte Cane	Vice Chair	Present	Charlotte Cane	District Councillor	Present
Catherine Gibson	Councillor	Present	Joshua Schumann	County Councillor	Not Present
Ed Hall	Councillor	Present			

Apologies for absence – There were none

Councillor Fletcher opened the meeting by making the following statement. She felt she wanted to make the following public as the complaint against her had been made public.

"It is clear that Councillor Fletcher was acting in her capacity as a Councillor at the time of the alleged breach as the alleged breaches took place at a Parish Council meeting on 4th April 2023. It is clear that the Code of Conduct was therefore engaged.

Having considered the matter carefully, I confirm that the Independent Persons and I are of the view that there has been no breach of the Member Code of Conduct.

In reaching our decision, myself and the Independent Persons considered your complaint and Councillor Fletcher's response to your complaint.

We have noted Councillor Fletcher's comments regarding your behaviour at the Parish Council meeting and that this resulted in the Chair persuading you to leave the meeting. After the meeting, Councillor Fletcher emailed the Parish Clerk to voice her concerns regarding your behaviour. In our view, it is not acceptable for anyone taking part as a Parish Councillor to feel threatened or intimidated in a public meeting.

Our view is that just because Councillor Fletcher signed the petition, this does not mean that she was predetermined. Although having signed a petition, this indicates a certain viewpoint at that moment in time. There has been a large time gap since then and that viewpoint may have changed or softened.

It is understood that Councillor Cane read out some advice that I had given her as the Council's Monitoring Officer at the meeting regarding signature of the petition and predetermination. She confirmed that anyone who believed that they remained predetermined should not take part.

Councillor Fletcher says that although she had signed the original petition, she declared at the meeting that she was not predetermined as there were numerous questions, she wished to raise on how the development plan became what it was and clarification of numerous areas. These questions were to enable her to gain more information to make a balanced and well informed decision and she made this declaration in public.

We have read through the questions Councillor Fletcher asked and these do not seem unreasonable or show anything that would lead us to believe that Councillor Fletcher was predetermined. Councillor Fletcher said from the outset, in public, that she was not predetermined and unless there is evidence contrary to this, then we have no reason to go against that.

In considering all the information, we have reached the decision that no breach of the Member Code of Conduct has taken place and no further action needs to be taken in this matter.

Conclusion – Stage 3 Decision

Under the Member Code of Conduct contained in the East Cambridgeshire District Council Constitution, the Independent Persons and I could find that there was no evidence to support an allegation that the East Cambridgeshire District Council Member Code of Conduct has been breached.

In accordance with Stage 3 of the procedure, I confirm that the Decision is:

- o No evidence of breach of the Member Code of Conduct; and*
- o Therefore, no further action will be taken."*

Forum for members of the public.

Two members of the public attended the meeting to talk about the Clunch Pit, the village tree works, The Hythe and Reach wood.

Nick Acklam reported that he had had a successful meeting with the surveyor at the Clunch Pit and the PC await the surveyor report.

Nick Acklam also reported he had met with a tree surgeon and a quote had been received. Two more quotes are required. **Clerk** to arrange and liaise with Nick Acklam.

He also spoke in support of the archaeology work at The Hythe and the LGS status.

Steve Boreham attended the meeting to talk about The Hythe and its importance and archaeology significance.

Following an informative and interesting talk Councillor asked questions to fully understand the request.

Steve also provided a biodiversity report on the cemetery due to a change of land management and the Reach Wood meadow experimental plot planting. Both show a successful increase in biodiversity.

Councillor Cane thanked Nick Acklam & Steve Boreham for their work at the two sites, The Hythe and the Clunch Pit and with regard to the trees and biodiversity within the village.

Declaration of Interests

There were none.

1. Planning

There was none.

2. District Councillor Report

The following report was not received in time to be discussed at the meeting but is included below for information. Councillor Cane apologised for this and highlighted the Pride of Place grant available.

Operational Services Committee met on 19 June. It agreed an updated environment plan, recognised the UN Sustainable Development Goals and asked officers draw up a plan to achieve at least an 80% reduction in carbon emissions from Council operations by 2030. Charlotte seconded the amendment to ask officers to draw up the plan for carbon reduction, as she was concerned that without a plan the target would not be met. In speaking against the amendment, the Vice Chairman of the Committee stated, "last week that it was too hot for solar panels to generate electricity". This statement is incorrect – solar panels do lose very small amounts of efficiency in very hot weather, but as it is very sunny for long hours in the summer, they still generate a great deal of electricity. Fortunately, his misleading statement did not carry the day and after agreeing to drop part of the amendment it was accepted.

The committee also appointed only Conservatives to all the outside bodies, even where there were two places. There was discussion of the overspend against budget of £742k, the bulk of which was due to the £470k extra fee paid to ECSS. As much of the discussion related to ECSS, the detail could not be raised in open session. Nevertheless, we raised the principle of there being a lack of any proper detail which gave rise to inaccurate figures, for example refuse collection was shown as £470k over budget and street cleansing as on budget, when we knew that resources had been moved from street cleansing to refuse collection, so street cleansing costs must be under budget with refuse collection further over budget. And recycling is shown as on budget when we know from ECSS papers that it was under budget – again, if this was shown correctly the overspend on refuse collection would be even higher. We pointed out that not understanding the costs for the past year made it very difficult to be confident that this year's costs were under control. We also raised the underspend on disabled facilities grants, where only about one third of the budget had been spent. It was accepted that this has a detrimental effect on those who need the works. The Council is trying to change how it procures these contractors, to make the process quicker. And some staff have been trained to do simple assessments so that people don't have to wait for a full Occupational Therapist assessment before getting changes to their bathrooms or having stairlifts fitted.

There were only two cases brought to Planning Committee. The Planning Committee for July has been cancelled, due to lack of business.

Charlotte is now one of the District Council's representatives on the Combined Authority's Overview and Scrutiny Committee. These places are governed by proportionality rules, so they have to be split between Conservatives and Lib Dems at East Cambs. This Committee met on 19 June and elected Charlotte as their Chair. The role of the Overview and Scrutiny Committee is to review or scrutinise decisions and actions taken by the Combined Authority or the Mayor. The Mayor attended the meeting in June and Charlotte took the opportunity to raise the need for proper local consultation as the transport plan is drawn up and to remind him of the need for Bottisham to be reinstated as a stop on the number 11 bus route.

There is a new grant scheme – Pride of Place – which Parish Councils and community groups can apply for - Pride of Place Grant | East Cambridgeshire District Council (eastcambs.gov.uk).

3. County Councillor Report

None received.

4. Minutes of previous Meeting

Approved as correct.

5.1 Reach Grant Fund

Nothing to report.

5.2 Finance

Clerk reported that she was in the process of setting up the facility to make online payment. **Councillors** to contact the bank to set up their authorisation to approve these payments

5.3 Parish Council Members

Councillor Cane had been contacted by a resident of Chapel Lane regarding a dispute with a neighbouring property. This is outside of the PCs remit. **Councillor Cane** to report back to the residents.

5.4 Play Spaces

Nothing to report.

5.5 Rights of Way

Nothing to report.

5.6 24Acres Committee

Nothing to report.

5.7 Neighbourhood Plan

On 22nd June the Neighbourhood plan had been published on the ECDC website, for its six-week publication period until 3rd August, during this time people can make comments on the plan. This publication period had been publicised by ECDC, and by the PC with email, and Facebook.

5.8 Friends Of Reach Wood

Steve Boreham is now the official WT warden for Reach Wood.

He had received a report by a dog walker and had encounter himself, two men dressed in camouflage in Reach Wood with a gun with a silencer and telescopic sight. The men said they were pest control to kill rats and rabbits, at the request of the local farmer. Steve will try to walk around the wood once a week, but dog-walkers see and hear a lot more. If you see anyone, please do report to the Steve Boreham or the PC, and contact the police on 101.

A new management plan had been produced by the WT, the FORW group sent some comments and are of the view that the plan is sensible and straight forward.

5.9 A to B1102 Group

Nothing to report.

5.10 Reach Fair

Councillor Fletcher reported that now she had become Chair she was unable to be the PC representative on the Reach Fair CIC as it was a conflict of interest. The PC felt a representative was no longer necessary and were confident that the CIC would inform the PC of anything they felt important.

6. Grant charity update

Papers were not available detailing the setting up of the new charity to run the Grant Fund, therefore it could not be discussed. Councillor Hall reported that the documents had been sent to the charity commission and a bank account was in the process of being opened. Should these things be complete before September an extraordinary meeting would be held to discuss.

The Reach Fair CIC had been informed of this situation but have a deadline of 31st August to pay out the money to avoid corporation tax. **Clerk** to inform them of the meeting discussion.

7. Application for Local Geological Site status on The Hythe, & The Hythe excavation

Cambridge Archaeology Field Group had asked the PC if they were able to conduct some very small-scale excavations in the Hythe area within the PCs land. The excavations would be up to 4 pits 1m x 1m x 1m. The main research question is to determine the date and sequence of the Hythe's construction, based on the assumption that it isn't a natural feature but rather one constructed. The volunteer group Cambridge Archaeology Field Group would to be involved, as well as any local pre-arranged volunteers.

The digging and recording of the test pits would take place over two-days, hopefully at the end of August/early September this year. And with the collection of the results, and in the context of other research they are already carrying out across several fen-edge areas in the region, they would offer a community talk in the village hall. All excavations would adhere to all required safety requirements, including a risk assessment and induction for all participants; and the test pits will be fenced off with safety netting. Furthermore, the County Council Historic Environment Team will be informed about the work. Once the excavations are finished, the spoil from the test pits will be returned into the excavation, packed down and consolidated, and any cut turf replaced. After a month or two, there will not be any evidence for the test pits having been dug.

The PC are enthusiastic and excited by this work. The PC is only able to give permission on the land believed to belong to the PC and the Cambridge Archaeology Field Group have separately asked AW for permission to excavate their land. The PC would require a detailed proposal of the work and its locations.

Councillor Fletcher proposed that the PC give permission based on the discussion requirements, seconded by Councillor Cane. Approved. **Clerk** to inform Cambridge Archaeology Field Group.

In April 2022 the PC had supported giving The Hythe LGS status.

Cambridgeshire Geological Society had contacted the PC. It has been considering which sites in the county could potentially be considered as Local Geological Sites (LGS). LGS is a local designation equivalent to a Local (County) Wildlife Site. The Hythe at Reach has been recognised as a site that potentially meets the criteria for becoming a LGS and it has, therefore, been identified as a 'candidate LGS.' LGS is a non-statutory designation and does not establish any legal rights such as access or management. However, we hope that site owners are willing to discuss the potential for maintaining and even enhancing the geological interest and, if relevant, promoting the geodiversity of the site. See the attached map showing the candidate LGS site boundary. The PC supports this, and Councillor Acklam will follow up with the Society.

Anglia Water have now also agreed, and Cambridgeshire Geological Society would like to make sure the PC are still in support as quite sometime had passed. Following an interesting presentation from Steve Boreham and discussion the PC approved, **Clerk** contact Cambridgeshire Geological Society.

8. Byways around the village

The Rights of ways officer had asked village residents whether they would support a restricted winter closure of the Straight Drove byway 14 to protect it from damage due to 4x4 vehicles but still allowing authorised vehicles access. Comments had been received both in support and opposing this. The majority supported action but initially of a less formal nature. Highways had already agreed that should the budget allow and there be availability road planing would be used to fill holes along byway 14 between Delver Bridge and Reach Footpath 1. **Councillor Cane** to investigate what the CCC Highways policies are with regard to repair of byways.

9. 20 is plenty

Councillor Cane had written an article for the magazine and asked for village view on applying to introduce 20MPH speed limits in the village. Replies had been few but all in favour of speed reduction. **Councillor Cane** to pursue when next opportunity becomes available.

10. Burwell solar farm liaison group – new committee member

Following the resignation of Councillor Mercer, a new committee member is required for the Burwell solar farm liaison group. **Councillor Gibson** agreed to take on this role.

11. Co-option of new Councillors, how to get more councillor.

Discussion took place regarding the need for new Councillors. It was agreed Councillors would continue to discuss the vacancies with residents when appropriate. It was also agreed that a more formal recruitment campaign should be initiated after the summer. Please contact the Clerk or Councillors should you be interested in joining the PC.

18. Payments

CR Contracts – Mowing contract	£276.50
S Bailey – Clerk salary	Confidential
ECDC – uncontested election costs	£250.00
HSA & Co – preparation of YE accounts	£444.00

Burwell and Reach Car Scheme

The Burwell and Reach Car Scheme offers those with travel restrictions or mobility issues a drive to the doctor, dentist, hospital, optician, hairdresser, shopping or just a visit to a friend, at a cost of 30p per mile. Just leave a message on 07399 154913 with your requirements and someone will get back to you. Or contact me, Pam King in Reach on 07484 852889.

If anyone in Reach would like to volunteer to drive we are always grateful for extra people. Just leave a message on the answerphone 07399 154913. DBS certificates are required but are easy to obtain through the scheme.



Diary Dates

August	Event	Location	Time
Tuesday 1	Recycling Day (Blue)		
Tuesday 1	Parish Council Meeting	Village Hall	7.00pm
Sunday 6	Holy Communion	St Etheldreda's, Reach	8.30am
Tuesday 8	Recycling Day (Brown/Green)		
Tuesday 15	Recycling Day (Blue)		
Wednesday 17	Holy Communion	St Etheldreda's, Reach	10.30am
Tuesday 22	Recycling Day (Brown/Green)		
Sunday 27	All Age Service with Baptism (TBC)	St Etheldreda's, Reach	3.00pm
Tuesday 29	Recycling Day (Blue)		

September	Event	Location	Time
Sunday 3	Holy Communion	St Etheldreda's, Reach	8.30am
Tuesday 5	Parish Council Meeting	Village Hall	7.00pm
Tuesday 5	Recycling Day (Brown/Green)		
Tuesday 12	Recycling Day (Blue)		
Tuesday 19	Recycling Day (Brown/Green)		
Wednesday 20	Holy Communion	St Etheldreda's, Reach	10.30am
Monday 25th	Village Hall AGM	Village Hall	8.00pm
Tuesday 26	Recycling Day (Blue)		

Bus Timetable

Stephenson's Number 11 – no service Sundays and Public Holidays - NS not Saturdays, Sa Saturdays only

	NS	Sa	Sa	NS										
Newmarket, The Guineas Bus Station	--	--	700	700	820	920	1020	1120	1220	1320	1420	1520	1620	1745
Newmarket, Studlands, Park Avenue	--	--	710	710	830	930	1030	1130	1230	1330	1430	1530	1630	1755
Burwell, Ness Road	639	649	--	--	--	--	--	--	--	--	--	--	--	--
Burwell, Hawthorn Way	641	651	723	723	843	943	1043	1143	1243	1343	1443	1543	1643	1808
Reach, Post Office	653	703	--	--	855	--	1055	--	1255	--	1455	1555	1655	1820
Swaffham Prior, Bus Shelter	658	708	737	737	900	957	1100	1157	1300	1357	1500	1600	1700	1825
Lode, Church	--	--	--	--	--	1004	--	1204	--	1404	--	--	--	--
Stow cum Quy, Station Rd Bus Stop	708	718	747	751	910	1012	1110	1212	1310	1412	1510	1610	1710	1835
Cambridge, Marshalls Airport	718	728	757	804	920	1022	1120	1222	1320	1422	1520	1620	1720	1845
Cambridge, Drummer St Bus Station	732	742	811	816	934	1034	1134	1234	1334	1434	1534	1634	1734	1859
Cambridge, Drummer St Bus Station	650	750	850	950	1050	1150	1250	1350	1450	1550	1715	1815	1915	
Cambridge, Marshalls Airport	702	802	902	1002	1102	1202	1302	1402	1502	1602	1727	1827	1927	
Stow cum Quy, Station Rd Bus Stop	712	812	912	1012	1112	1212	1312	1412	1512	1612	1737	1837	1937	
Lode, Church	--	--	920	--	1120	--	1320	--	1520	--	1745	--	--	
Swaffham Prior, Bus Shelter	723	823	926	1023	1126	1223	1326	1423	1526	1623	1751	1848	1948	
Reach, Post Office	728	828	--	1028	--	1228	--	1428	--	1628	--	1853	1953	
Burwell, Hawthorn Way	738	838	938	1038	1138	1238	1338	1438	1538	1638	1803	1903	2003	
Newmarket, Studlands, Park Avenue	752	852	952	1052	1152	1252	1352	1452	1552	1652	1817	1917	2017	
Newmarket, The Guineas Bus Station	802	902	1002	1102	1202	1302	1402	1502	1602	1702	1827	1927	2027	

Then and Now (see facing page for pictures)

The view of the bungalow sitting the fen side of Delver Bridge has changed little since the older of the two photos was taken around 1960.

At the time, Albert Johnson farmed from both this property and 'Snakehall Farm' on the Swaffham Road.

Chris Patterson

Contact Information

Parish Council – see “Know Your Parish Council”		
Village Hall		
Chair	David Thomas	01638 742676
Finance	Andrew Trump	01638 743335
Bookings	Tash Bridgeman	07920 516586 rvhcb25@gmail.com
Secretary	Sue Elliott	01638 742268
Tents and Village Games Bookings	Claire Halpin-McDonald	01638 743330
Church		
Vicar	Eleanor Williams	01638 741262
Curate (Duty days Wed, Fri and Sun)	Reverend Paula Spalding	07545 868549
Priest in Retirement	Reverend David King	01638 742924
Churchwarden	Dr Stephen Martin	01638 611235
Emergencies		
Electricity (Eastern Electric)		0800 783 8838
Police (Emergency)		999
Police (Non-Emergency)		101
Water (Anglian Water)		08457 145145
Doctors, Burwell		
Contact Phone Numbers		01638 741234, out of hours dial 111
Surgery Hours		Mon to Friday, 8.30am to 6.00pm
Website	https://www.theburwellsurgery.co.uk/index.aspx	